

GlobalSoilMap.net Inauguration North American Node

Jon Hempel
Co-Director/NA Node Leader
National Geospatial Development Center
Natural Resources Conservation Service
Morgantown, West Virginia
February 17, 2009

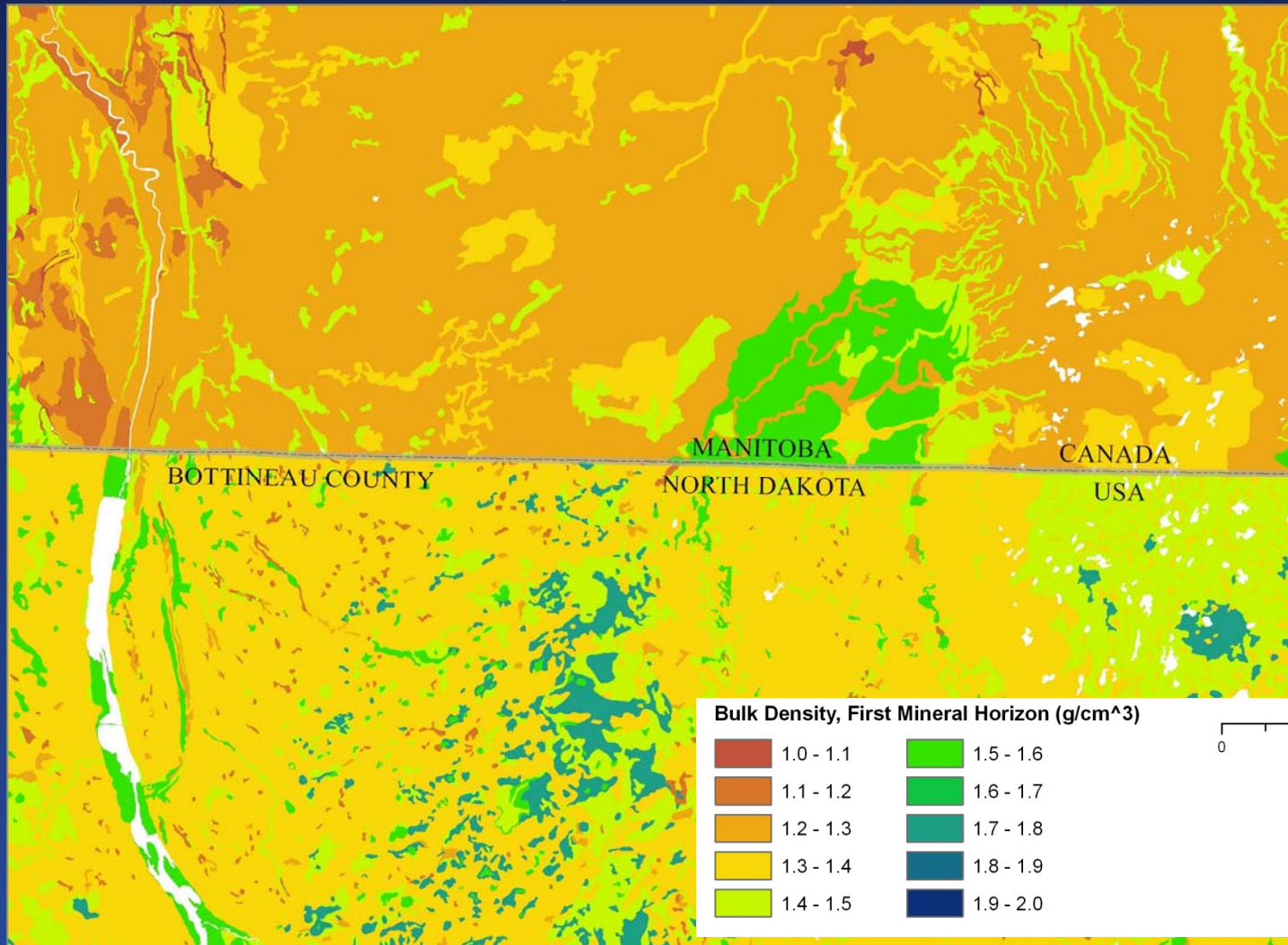
Soil Survey Information in North America

- Current soil survey information in North America is based on a vector (polygon) model
- The soil survey information for GlobalSoilMap.net is based on a raster (pixel) model
 - 90 x 90 m

Traditional polygon map- vector (polygon) model



Digital map of soil bulk density derived from legacy data



Bulk Density:
First mineral
horizon,
weighted by map
unit composition

Source:
1:12,000-
1:40,000 scale
data

Resolution:
10 meters

Uses of GlobalSoilMap.net information in North America

- Provide high resolution soil information to unmapped (and mapped) areas in North America
- Used by policy makers and land managers for important environment issues
 - Carbon sequestration (Global Climate change)
 - Define areas of soil (environmental) degradation-erosion, desertification, urban
 - Identify Best Management Practices

Uses of GlobalSoilMap.net information in North America

- Soil attributes are critical inputs for ecosystem services
- Provide a consistent set of data that is geographically continuous
- Provide scalable soil information for users at a field level to modelers needing regional or continental information
- Provide uncertainty values for all predictions



Thank You!